

CSView

Get the right view!



View



Print



Mark Up



CSoft

Support for many different file formats, from 2D CAD drawings to raster and compressed image to PDF and hybrid files

Extensive image, CAD, raster vector and hybrid support

CSView 5.0 has been divided in two versions

Advanced printing parameters setup



Get the right view!

The amount of information encountered in technical environments today is enormous and typically comes from many different sources. To be able to review this data and collaborate with other users about specific details requires a robust visualization tool that handles many different file formats. CSView provides maximum flexibility incorporating diverse data and can also be used as a standalone application, integrated with industry standard document management systems or invoked from within any application that contains an ActiveX control.

Features

Graphical User Interface

Users of other CSoft products will appreciate that CSView has an XP style GUI that they already know. The user can change the position of application windows, toolbars and menus at will. The powerful customization feature allows the user to add and to customize menus and toolbars. It is also possible to associate accelerator keys with any function of CSView.

Viewing Features

The main function of any viewer is to show the content of a document as fast and precisely as possible. It is also necessary to supply users with tools to navigate easily in documents. With CSView the user can open documents of different file formats, including raster images, vector CAD-files, PDF and hybrid (raster-vector) documents. Each document can be manipulated with the same set of tools. It is possible to zoom, pan over the drawing, control the display of layers in layered drawings, such as AutoCAD DWG or DXF les, etc. For better quality of colour raster images halftone display is used.

Printing Features

In CSView printing can be easily configured for a particular printer. A full print preview is available to check the output settings. It is simple to select what you want to print. The results can be scaled to the desired size or automatically fit the available paper size. Also - all predefined printing parameters such as printing paper format and orientation, document position on printing paper, etc can be stored in printing templates and retrieved later.

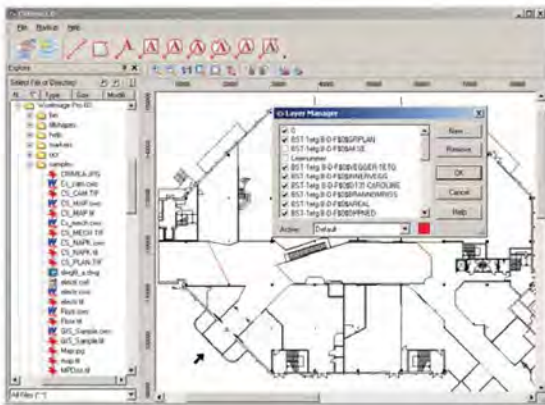
Integration

CSView has COM-based architecture for optimal speed, performance, stability and security. It provides two versions - a standalone application and an embedded ActiveX-control application. It is possible to integrate CSView control into an industry standard EDM or PDM system or into any other application that can contain an ActiveX control object.

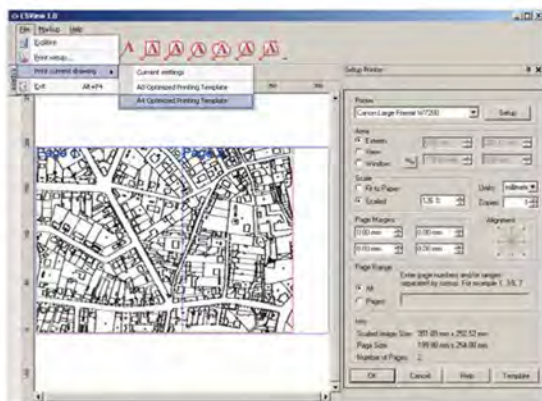
Markup (Optional)

Markups are separate files which are linked to their associated documents. They can be stored on any drive or media, making them available to other connected users. This is an invaluable asset, greatly facilitating communication and collaboration between team members. Any viewable document can be annotated to implement collaborative content creation, change requests, ECOs, and other revision and versioning functions.

The Markup Plug-in allows for creation of Rectangles, Rounded rectangles, Ovals, Lines, Polylines, Bubbles and Text as markup objects. The user can move, scale, rotate or edit any marked-up object. Markups can contain hyperlinks. A text comment with frames and arrow pointers allows team members to share ideas and highlight problem areas in the design. Multiple colours, semi-transparent mode for backgrounds and various fill styles can be used to distinguish different markups. Furthermore, layers can be used to manage markup. Markup drawing commands utilize raster/vector snap and ortho mode to accurately draw comments.



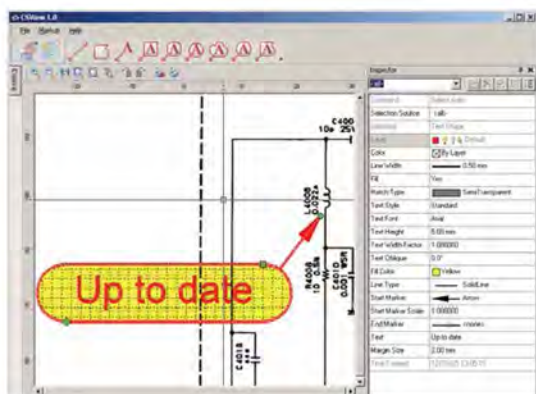
Layer management



Printing template

Supported file formats

Adobe Portable Document Format (raster only) (*.pdf)
AutoCAD 2000-2006 Drawing File (*.dwg)
AutoCAD DXF (*.dxf)
Microstation Design File (*.DGN)
CALS Files (*.cal, *.cg4, *.gp4, *.mil)
ER Mapper Compressed Wavelet (ECW) (limited edition only)
HPGL File (*.plt, *.hp)
Intergraph Raster Type 24, including multipage files (*.cit)
JEDMICS C4 (*.c4, *.ct4)
JEDMICS T4 (*.tg4, *.t4)
JP2, JPK (JPEG 2000) (*.jp2, *.jpk)
JPEG, JPG (Joint Photographic Experts Group) (*.jpeg, *.jpg)
LizardTech SID File (*.sid)
MIL files (*.MIL)
Portable Network Graphics (*.png)
Run Length Encoded File (*.rlc)
RxVector 4.x Vector Data File (*.vc4)
RxVector 5.x Vector Data File (*.vc5)
RxSpotlight 3.0 Workspace File (raster only)(*.ws)
SHP (ESRI shape file) (*.shp)
WisImage 5.x Document (*.cws, *.csrl)
WisImage 6.x Workspace File (*.cws)
Tagged Image File, including multipage files (*.tif)
Windows Bitmap (*.bmp)
Windows MetaFile (raster only) (*.wmf, *.emf)



Redlining option